

*External Guide to using the
OSi National Townland and
Historical Map Viewer*

Contents

Tables/Figures	2
Table 1: Document Control	2
Key definitions	2
Background:	3
Using the OSi National Townland and Historical Map Viewer	3
1. Overlaying Historical Maps in the Map Viewer	3
2. Using the Transparency Tool in the Map Viewer	3
3. Using the Swipe Function in the Map Viewer	7

Tables/Figures

Table 2: Key Definitions	2
Table 3: Relevant Software/Products	2
Figure 1: Basemap Selection in the Map Viewer	3
Figure 2: Layers Widget location in the Map Viewer	4
Figure 3: Layers list opened in the Map Viewer	4
Figure 4: Historical basemap added to the Map Viewer	4
Figure 5: Zooming to layers/basemaps added to the Map Viewer	5
Figure 6: Layers zoomed to correct visibility range	5
Figure 7: Setting the transparency for layers	6
Figure 8: Transparency slider for layers	6
Figure 9: Setting the transparency for layers	6
Figure 10: Historical mapping overlay on GeoHive basemap using transparency slider	7
Figure 11: Swipe bar added to the Map Viewer	7
Figure 12: Swipe bar swiped to the left in Map Viewer	8
Figure 13: Swipe bar swiped to the right in Map Viewer	8

Table 1: Document Control

Key definitions

Widget: Map Tools adding functionality to the Map Viewer such as Add Data, Basemap Gallery, Layers, Swipe, Measure in the Map Viewer

Table 2: Key Definitions

Software/Products

Software/Product	Version
ArcGIS Online	

Table 3: Relevant Software/Products

Background:

The Ordnance Survey Ireland National Townland and Historical Map Viewer enables users to search for Townlands, view historical features, to choose from a set of historical and current basemaps and to use the swipe tool to compare maps.

The National Townland and Historical Map Viewer can be found at the following link:

<https://geohive.maps.arcgis.com/apps/webappviewer/index.html?id=9def898f708b47f19a8d8b7088a100c4>

Using the OSi National Townland and Historical Map Viewer

1. Overlaying Historical Maps in the Map Viewer

The OSi National Townland and Historical Map Viewer allows users who are particularly interested in overlaying historical maps with current mapping to do so in the Map Viewer. This can be done in two ways:


- Using the **Transparency Slider** found in the layers list.
- Using the **Swipe Function** in the Map Viewer.

2. Using the Transparency Tool in the Map Viewer

- Add your basemap of choice to the Map Viewer using the **Basemap Gallery**. In this case the GeoHive basemap has been selected.



Figure 1: Basemap Selection in the Map Viewer

- To view comparisons between the GeoHive basemap and a historical basemap select the historical basemap through the **Layers Widget** in the Map Viewer. This can be found at the left-hand side of the Map Viewer. Press .

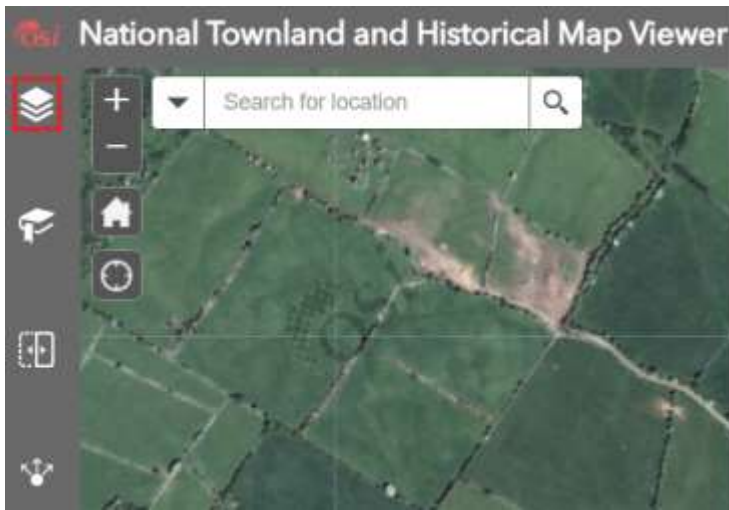


Figure 2: Layers Widget location in the Map Viewer

- A layer list will open in the Map Viewer. Add the historical basemap you would like to compare to the Map Viewer using the layers list.

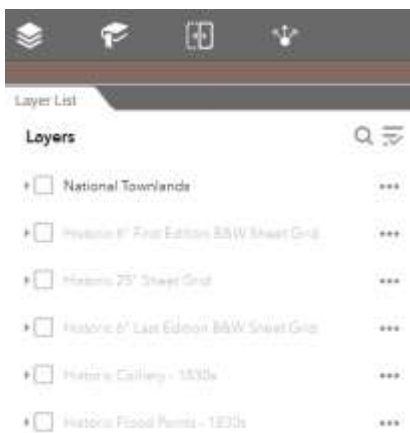


Figure 3: Layers list opened in the Map Viewer

- For this example, the Historic 6" First Edition Colour layer will be added to the Map Viewer. To add the basemap to the Map Viewer, tick the box to the left-hand side of the basemap.



Figure 4: Historical basemap added to the Map Viewer

Please Note: If any layer/basemap is greyed out in the layer list press the three ellipsoids *** to the right-hand side of the layer. Choose **Zoom to**. This will zoom to the layer visibility range in the Map Viewer.

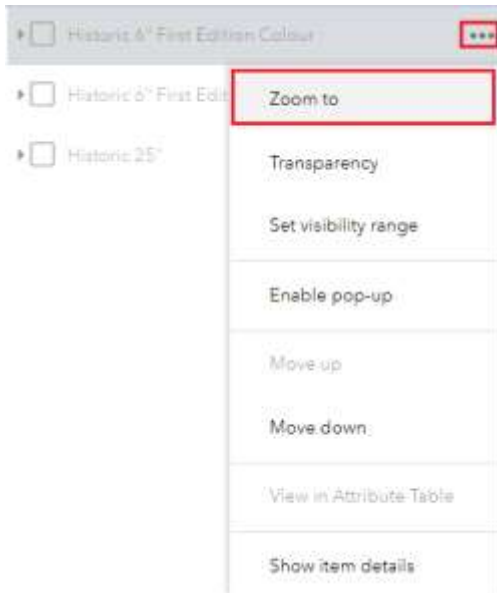


Figure 5: Zooming to layers/basemaps added to the Map Viewer

- The layer will no longer have a greyed-out appearance in the layer list.

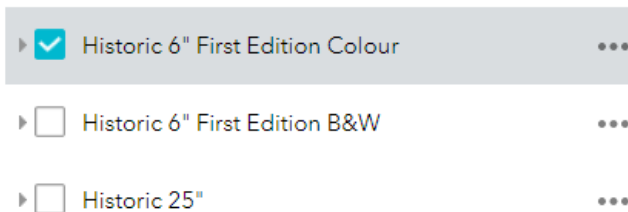


Figure 6: Layers zoomed to correct visibility range

- To change the transparency of the added layer, press the three ellipsoids *** to the right-hand side of the layer. Choose **Transparency**.

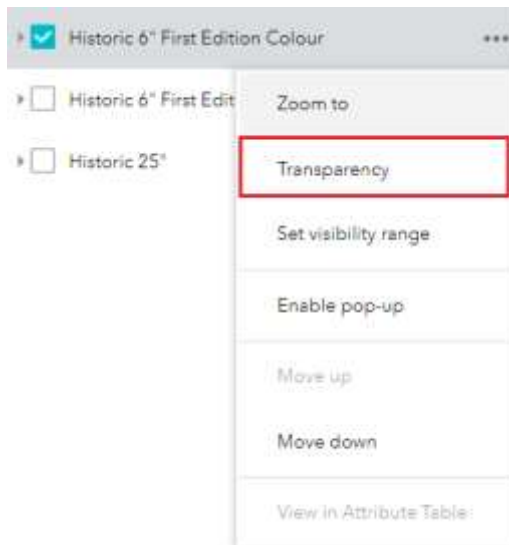


Figure 7: Setting the transparency for layers

- A transparency slider will appear beside the basemap in the layer list.

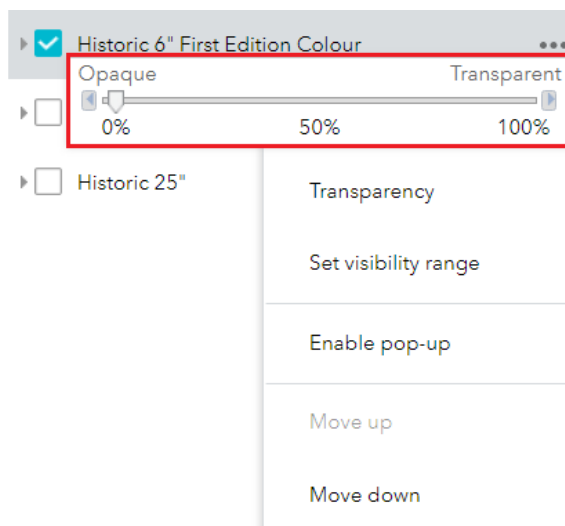


Figure 8: Transparency slider for layers

- Move the transparency slider to the right to increase the transparency of the layer. In the case below the transparency has been set at approximately 50%.

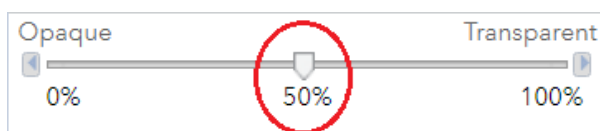


Figure 9: Setting the transparency for layers

- This will allow the user to see the GeoHive imagery below the historical mapping for comparison.

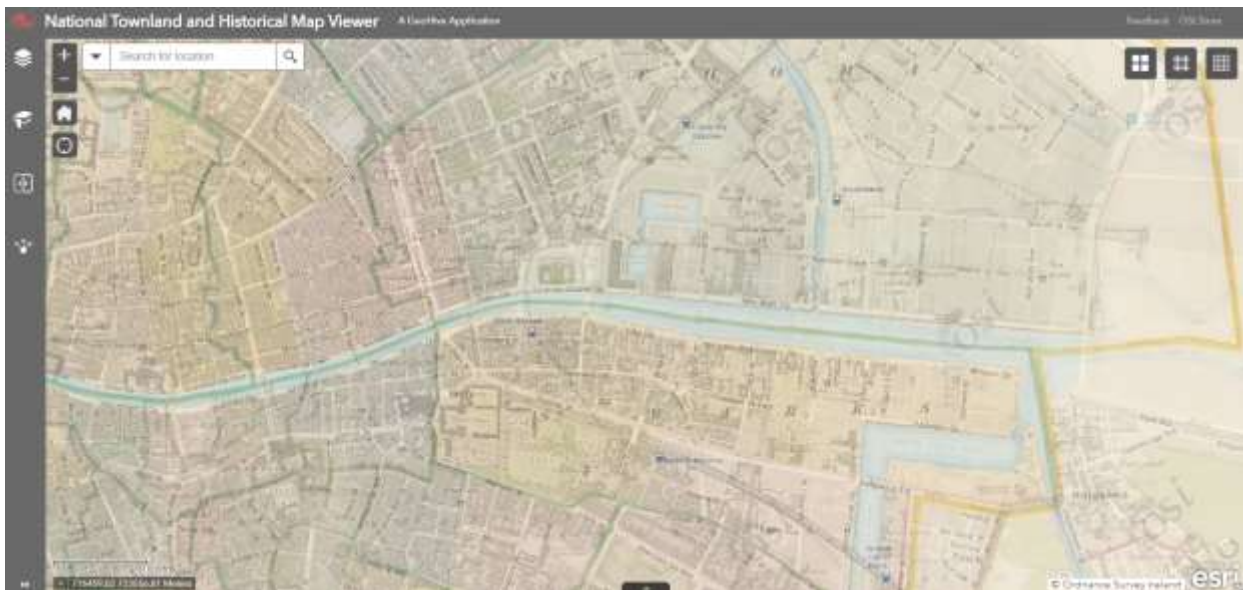


Figure 10: Historical mapping overlay on GeoHive basemap using transparency slider.

3. Using the Swipe Function in the Map Viewer

Please Note: Users can also switch to using the Swipe Widget in the National Townland and Historical viewer to compare the basemaps. If transparency has already been set for the historical mapping this will follow through when the user presses the Swipe function. See section 2 for details on setting transparency for layers.


- To use the swipe functionality, press the **Swipe Widget** in the Map Viewer by pressing .
- A vertical swipe bar will be added to the centre of the Map Viewer. The user can use this to swipe left or right to compare basemaps.



Figure 11: Swipe bar added to the Map Viewer

- Swipe left to see more of the GeoHive basemap

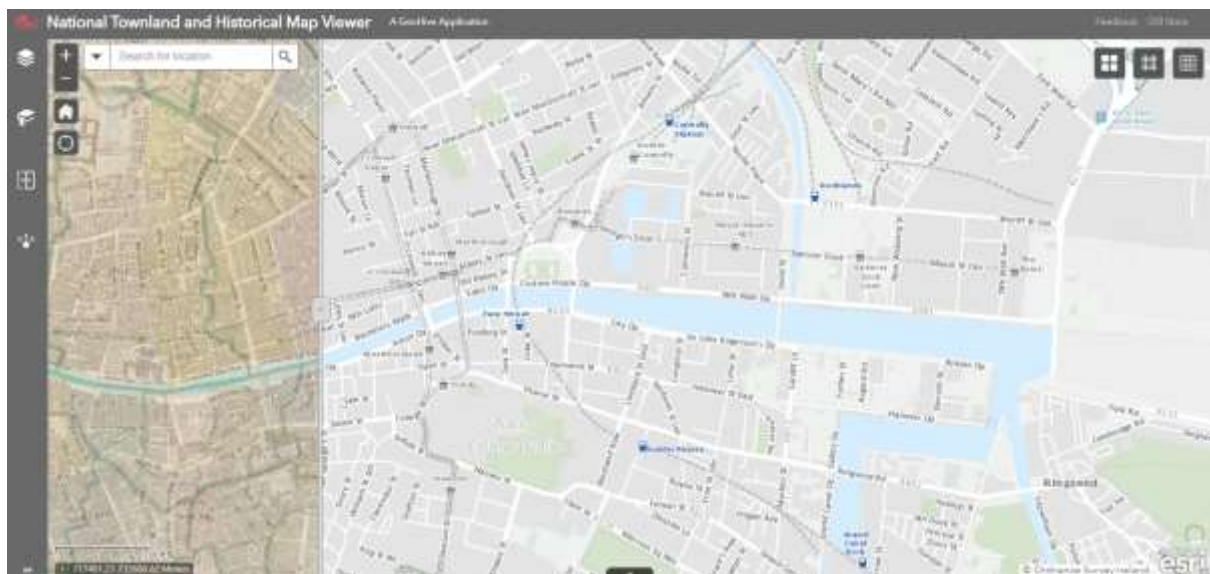


Figure 12: Swipe bar swiped to the left in Map Viewer

- Swipe right to see more of the historical basemap.



Figure 13: Swipe bar swiped to the right in Map Viewer

- Click the **Swipe** widget icon to turn off the widget.