



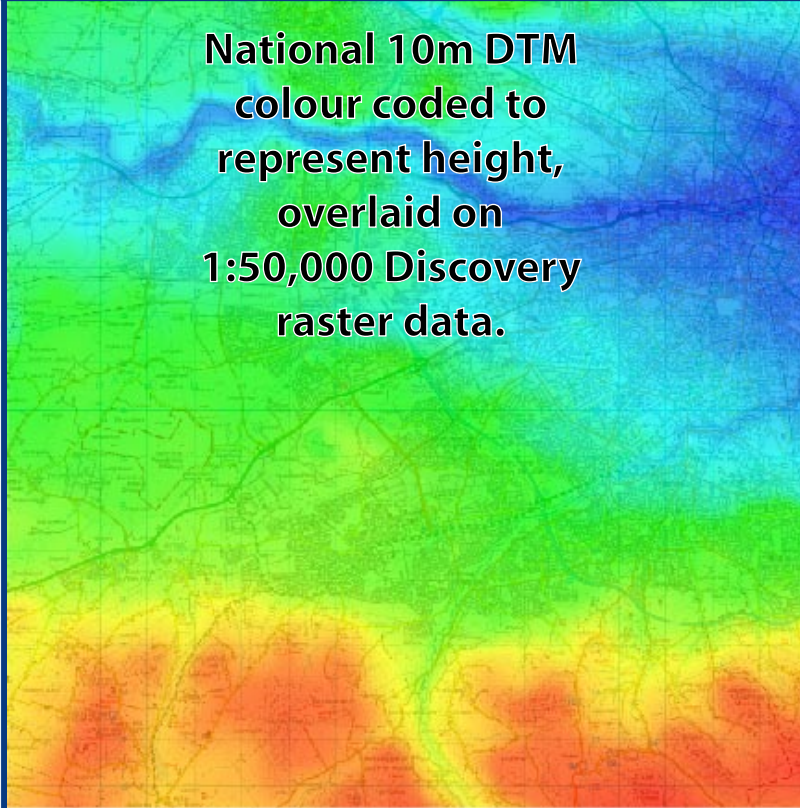
Ordnance
Survey
Ireland

National Height Model

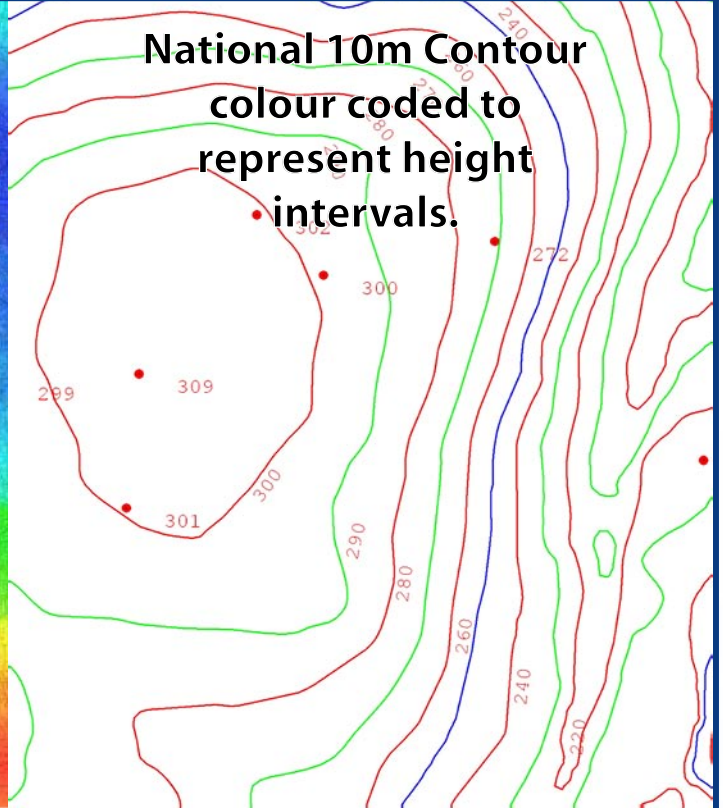
Series Two: 10m & 2m DTM

National DTM / Contours with 10m grid posting, +/- 10m vertical accuracy on hard flat open surface only

National 10m DTM
colour coded to
represent height,
overlaid on
1:50,000 Discovery
raster data.



National 10m Contour
colour coded to
represent height
intervals.



Description: Replacing and updating our previous 10 m DTM Series 1 Height Product, the Series 2 & 3 DTM's are produced using data of best available currency. These products provide greater temporal confidence and consistent output of information nationally. The DTM's are available at a 2 metre or 10 metre intervals.

Data Series: Series 2 DTM Height information is derived from Series 2 Photogrammetry which is generated from imagery captured by OSi's ADS 100 Digital camera. The imagery dates from 2016 to 2018. Some LiDAR derived data was also use to improve accuracy.

Coverage: National coverage (Republic of Ireland)

Specifications: The Series 2 DTM's are derived from 2 metre data and are output at 2 m and 2 m postings with and accuracy of 1.5 m.

File Formats: DTM's are supplied in CSV file format in Irish Transverse Mercator (ITM) and Irish Grid (IG) projections. They are available as 20 km x 20 km tiles (250 tiles for National Coverage) or by Area of Interest (AOI).

Contact: Digital Sales, Ordnance Survey Ireland, Phoenix Park, Dublin 8, D08 F6E4, Ireland.
E-mail: digitals@osi.ie -Tel: +353-1-802-5376 - www.osi.ie

Ordnance Survey Ireland (OSi) maps, data and publications are protected under the terms of the Copyright Acts. Anyone wishing to reproduce OSi material, or use it as a basis for their own publications, must obtain a licence from OSi, for which a fee may be payable.

OSi have made all reasonable efforts to ensure the accuracy of the information contained within this Product Specification Sheet, however we can not accept responsibility for errors or omissions herein.