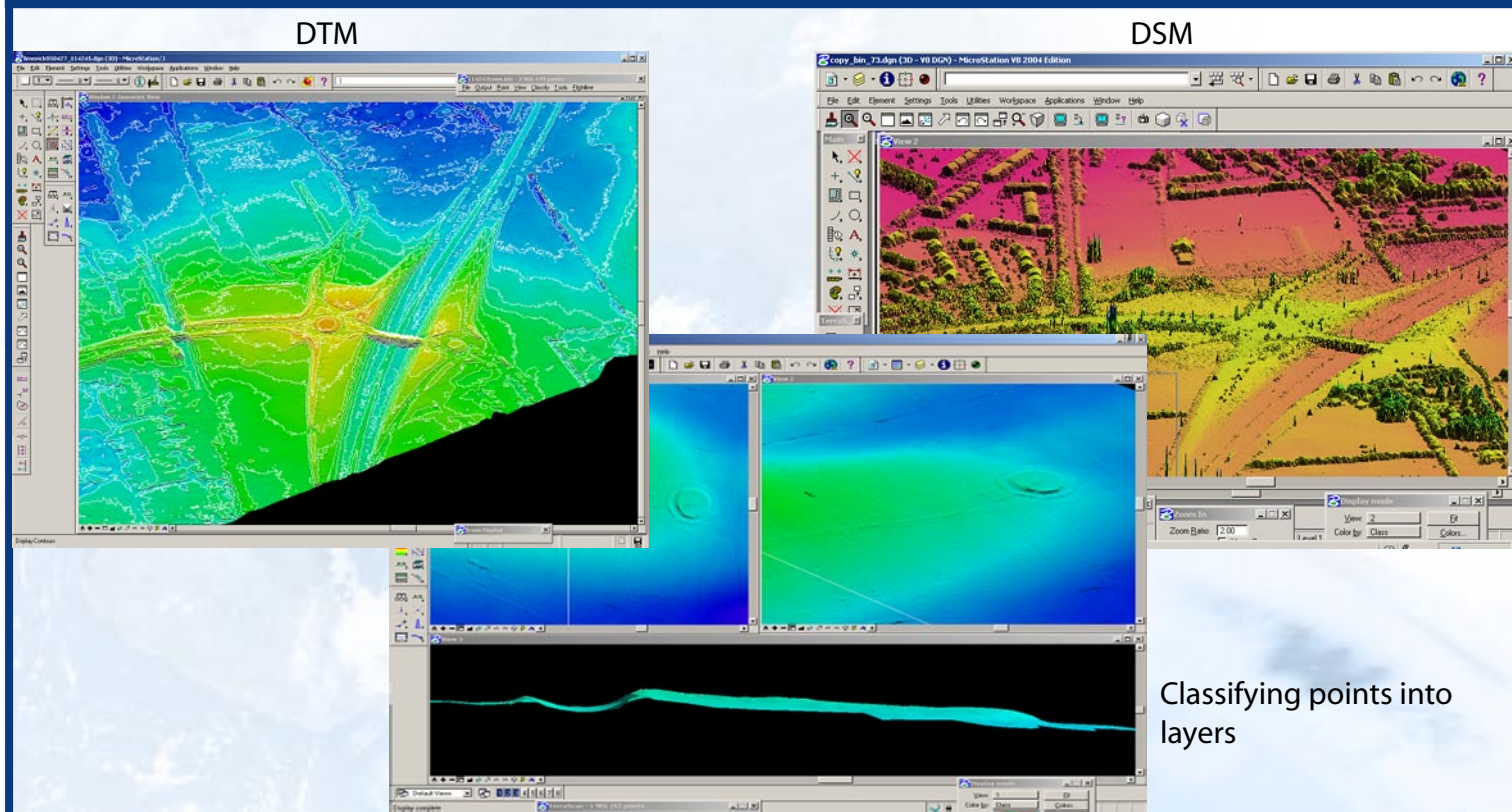


## Highly Accurate Digital Terrain Models (DTM) or Digital Surface Models (DSM)



**Description:** After capturing the raw point cloud each point is capable of being classified into different layers i.e. Ground, Buildings and Vegetation. The final outputs from the point cloud are either a Digital Terrain Model (DTM) or a Digital Surface Model (DSM). These outputs are of high accuracy and give a vertical accuracy of 25cm. The Height data stored in our National Height Database (Elevate) is a Digital Terrain Model (DTM).

**Data Series:** Lidar data captured between 2006 and 2014.

**Coverage:** Selected coverage of 6 major Cities, Large towns and various urban and rural locations.

**Specifications:**

- Urban Specification: Digital Terrain Model (DTM) 2 metre posting 25cms Vertical Accuracy on hard, flat, open, level surfaces.
- Rural Specification: Digital Terrain Model (DTM) 2 metre posting 25cms Vertical Accuracy on hard, flat, open, level surfaces.
- Corridor and custom contracts to customer specification.

**File Formats:** Supplied in Irish Transverse Mercator (ITM) or Irish Grid (IG) in ASCII or CSV file format.

**Contact:** Digital Sales, Ordnance Survey Ireland, Phoenix Park, Dublin 8, D08 F6E4, Ireland.  
E-mail: [digitals@osi.ie](mailto:digitals@osi.ie) Tel: +353-1-802-5376 - [www.osi.ie](http://www.osi.ie)