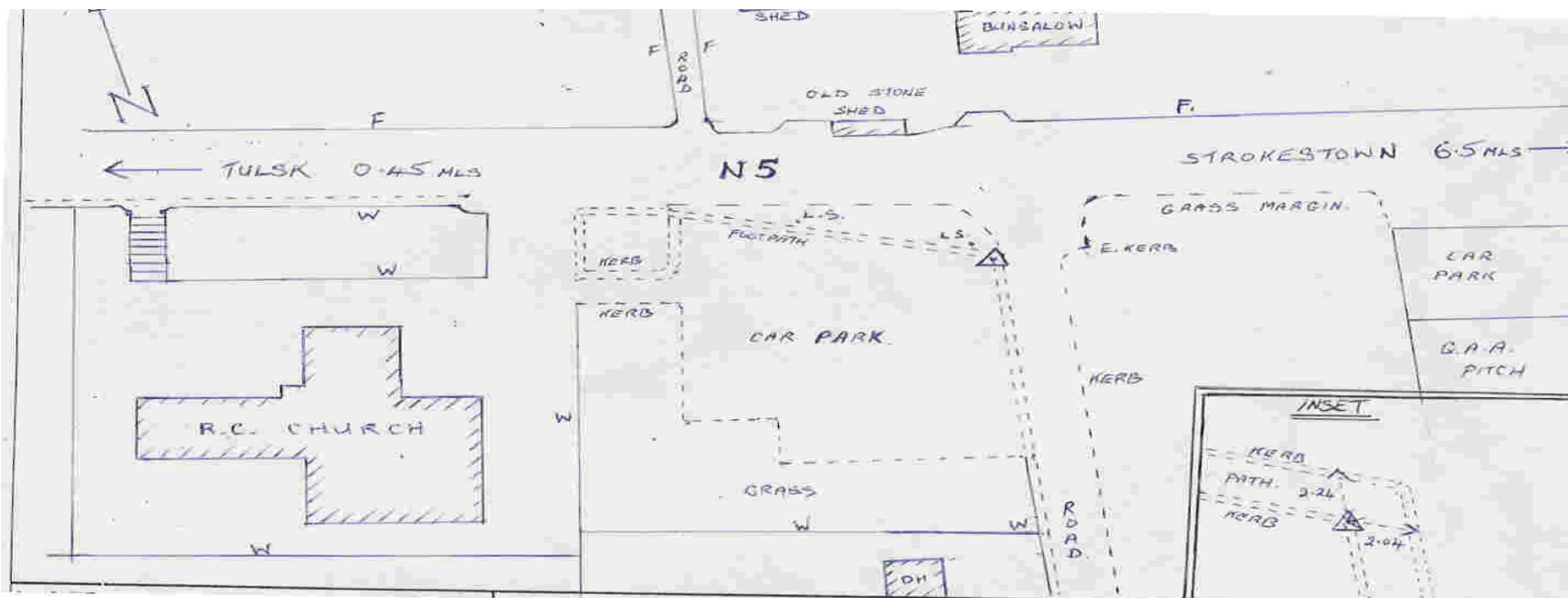


IRENET CONTROL STATION D069 TULSK



IRENET-95 COORDS. (ETRF89)

LAT 53° 46' 30.27462
 LONG. 08° 14' 27.28325
 ELLIP. HT. 125.997

ITM COORDINATES

Easting: 584119.843
 Northing: 780636.926
 Ht. (MSL mts)

IRISH GRID COORDINATES

Easting: 184165.530
 Northing: 280619.845
 Ht. (MSL mts) 68.501 (Sp. Level)

WRITTEN DESCRIPTION

This station consists of a brass rivet set in concrete kerbstone of footpath surrounding car park adjacent to Tulska R.C. Church. It is positioned in the inner junction of kerb at the n.e. corner of car park.

Note: All measurements shown are in metres. Sketch is not to scale.

GEODETIC SURVEYOR :

DATE: