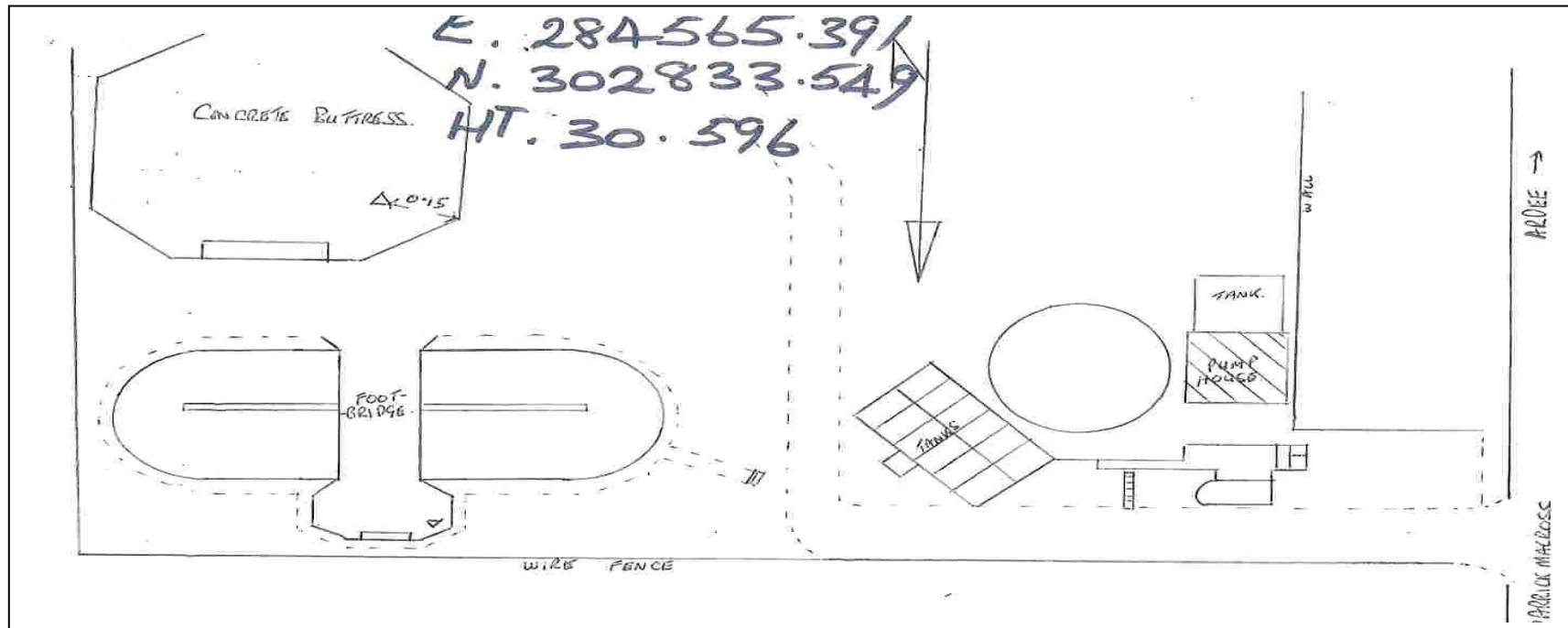


## IRENET CONTROL STATION D. 134 CARRICKMACROSS



### **IRENET-95 COORDS. (ETRF89)**

LAT            53° 58' 04.73118  
 LONG.         06° 42' 43.79697  
 ELLIP. HT.    87.3883

### **ITM COORDINATES**

Easting:       684498.117  
 Northing:     802844.924  
 Ht. (MSL mts)

### **IRISH GRID COORDINATES**

Easting:       284565.391  
 Northing:     302833.549  
 Ht. (MSL mts) 30.596

### **WRITTEN DESCRIPTION**

This station consists of a brass rivet set in raised mass concrete buttress of footbridge of a large water treatment tank as shown. This tank is located at the north east corner of the compound at Carrickmacross Water Treatment plant on the main Ardee road and is 0.5 miles south of Carrickmacross on the east side of the road.

**Note:** All measurements shown are in metres. Sketch is not to scale.

**GEODETIC SURVEYOR :**

**DATE:**